


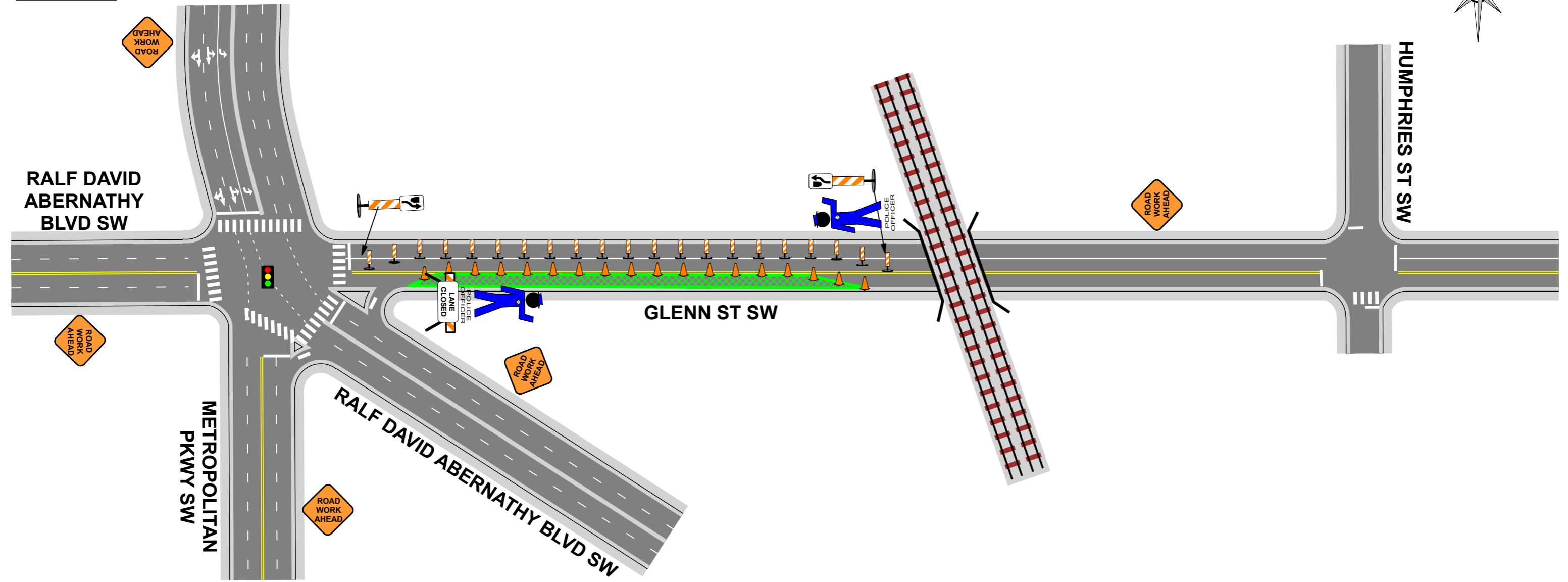


Legend

-  Work Area
-  Cone
-  Vertical Face Panel



- NOTE:**
1. Plans not to scale. Actual site conditions may affect placement and spacing of traffic control devices and advance warning signs.
 2. Contractor will maintain accessibility to driveway at all times.
 3. All traffic control shall conform to the 2009 MUTCD and Georgia DOT Standards.

500 FT WORK AREA

**GLENN ST SW
SOUTH CURB LANE CLOSURE
BETWEEN HUMPHRIES ST SW
AND METROPOLITAN PKWY SW**

**GARDEN FILMS PRODUCTIONS, LLC
"BAD BOYS III"**

4111 Pleasantdale Rd, Suit a
Atlanta, Georgia 30340
Office: 404-900-7825



SAFETY SIGNAL CO., INC.
P.O. BOX 488
UNION CITY, GEORGIA 30291
OFFICE: 770/964-3181 FAX: 770/964-4005
Drawn by: CT White Date: 12-17-18