

WEST END LIVABLE CENTERS INITIATIVE (LCI)

The City of Atlanta Department of City Planning and the Atlanta BeltLine, Inc. have teamed up to coordinate two planning efforts - the West End Livable Centers Initiative (LCI) and the Atlanta BeltLine Subarea 1 Master Plan update. The LCI study area includes the West End neighborhood in NPU T and part of Adair Park in NPU V. The Subarea 1 geography includes the West End LCI area and several more neighborhoods – Westview, Adair Park, Oakland City; parts of Mechanicsville, Pittsburgh and Cascade Avenue. The map shows the study boundaries for both plans.

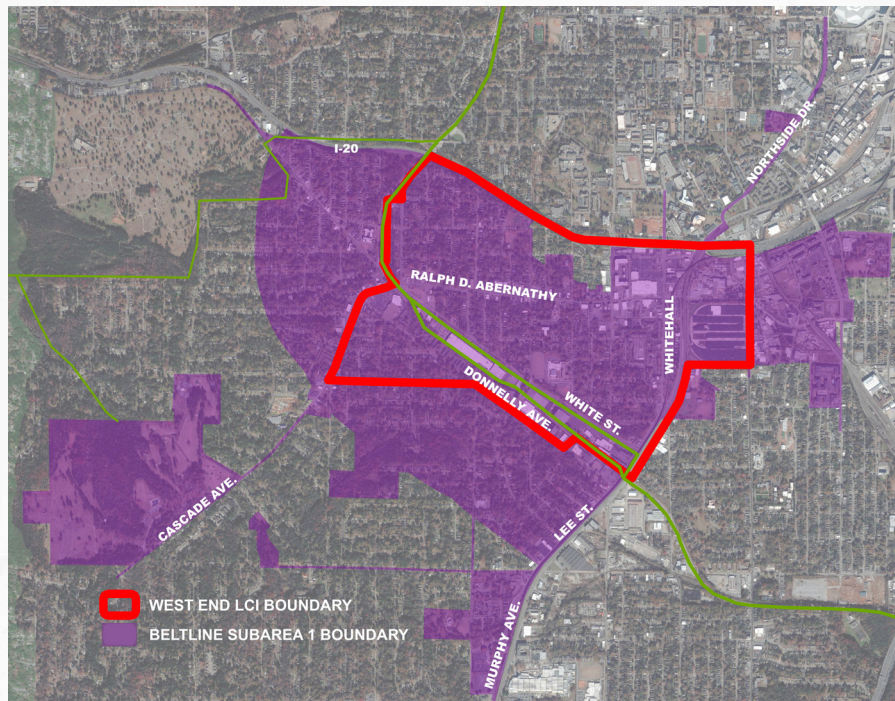
LCI Program Overview

The Atlanta Regional Commission's Livable Centers Initiative (LCI) program incentivizes jurisdictions to re-envision communities as vibrant, walkable places that support mobility options, healthy lifestyles, and improved access to jobs, services, and housing. The LCI program provides federal grants for planning studies, and for communities with an adopted LCI Plan, federal grant funding for transportation projects that are identified in the Plan. The components of an LCI plan are:

- Providing access to a variety of travel modes including transit, roadways, walking and biking,
- Encouraging mixed-income residential neighborhoods, employment, shopping and recreation options, and
- Developing an outreach process that promotes the involvement of all stakeholders.

West End LCI

The original West End Historic District LCI, adopted in 2001, focuses on strengthening employment centers, historic districts, community identity, civic spaces, and streetscapes by developing strategies for redeveloping properties, targeting infill development, and enhancing connectivity and mobility. While significant progress toward achieving these goals has been made, this planning process is an opportunity to revisit the 2001 Plan. The updated West End LCI will offer a revised implementation plan reflecting the community's vision and today's market conditions. The West End LCI Plan is a collaborative effort among community residents and business, Councilmember Cleeta Winslow, Councilmember Joyce Sheperd, the Department of City Planning, and the Atlanta Regional Commission. Public Involvement will play a central role in the development of the plan, promoting the involvement of all stakeholders within the study area via a variety of opportunities for engagement.



Community Meeting Dates

Kick Off Meeting
 Thursday May 30, 2019
 6:00 pm - 8:00 pm
 West End Family & Life Center
 1191 Donnelly Avenue SW
 Atlanta, GA 30310

Workshop
 Saturday July 13, 2019
 9:00 am - 12:00 pm
 Herman J. Russell Center for Innovation
 & Entrepreneurship
 Symposium Training Room
 504 Fair Street
 Atlanta GA 30310

Draft Recommendations - Aug 2019
 Final Recommendations - October 2019